

# Product Information Crawler Excavator

## R 918

Litronic®

### Generation

6

### Motor

120 kW / 163 HP  
Stage V

### Operating Weight

19,550–22,650 kg

### Bucket Capacity

0.55–1.15 m<sup>3</sup>



# LIEBHERR

# Experience the Progress

## R 918

### Equipment

- Large choice of types and sizes of equipment
- Longer lifespan of components and higher productivity thanks to automatic centralised lubrication system
- Safety check valves for hoist and stick cylinders

### Comfort

- Spacious, air-conditioned work space
- Airsprung seat with vertical and horizontal suspension
- Easy-to-use high resolution 7" colour touchscreen
- Completely retractable front cab window

### Undercarriage

- Robust X-frame undercarriage, easy to secure thanks to its integrated eyelets
- Easy maintenance
- Several combinations of undercarriage and blades/ support blades available
- Extra storage as an option
- Maintenance-free travel gear and track rollers with lifetime lubrication





### **Safety**

- Panoramic visibility with no obstructions and camera on the rear and the right side equipment for enhanced safety
- Lifiable console for easy and safe access to cab
- ROPS-certified cab structure: rollover protection
- Emergency exit via the rear cab window
- Right window and windshield in laminated and tinted glass

### **Engine**

- New engine that conforms with the Stage V European exhaust emissions standard
- Automatic idle-stop

### **Maintenance**

- Servicing concept, with service points accessible from ground level
- Engine oil level and filling nozzle accessible from ground level
- Standard shut-off valve on hydraulic tank outlet

# Technical Data



## Engine

<b>Rating per ISO 9249</b>	120 kW (163 HP) at 1,800 RPM
<b>Torque</b>	682 Nm at 1,400 RPM
<b>Model</b>	D924 A7-05 – FPT motor designed for Liebherr
<b>Type</b>	4 cylinder in-line
Bore	104 mm
Stroke	132 mm
Displacement	4.5 l
<b>Engine operation</b>	4-stroke diesel Common-Rail Turbo-charged and after-cooler
<b>Exhaust gas treatment</b>	Stage V DOC + DPF + SCR Passive regeneration by thermo management
Option	Particle filter
<b>Cooling system</b>	Water-cooled and integrated motor oil cooler
<b>Air cleaner</b>	Dry-type air cleaner with pre-cleaner, primary and safety elements
<b>Fuel tank</b>	368 l
<b>Urea tank</b>	46 l
<b>Electrical system</b>	
Voltage	24 V
Batteries	2 x 135 Ah/ 12 V
Alternator	Three-phase current 28 V/ 140 A
Engine idling	Sensor controlled



## Hydraulic Controls

<b>Power distribution</b>	Via control valves with integrated safety valves, simultaneous and independent actuation of undercarriage, swing drive and equipment
<b>Servo circuit</b>	
Equipment and swing	Proportional via joystick levers
Travel	– Proportional control via foot pedals or removable levers – Speed pre-selection
<b>Additional functions</b>	Proportional regulation via foot pedals or mini-joystick



## Hydraulic System

<b>Hydraulic pump</b>	Liebherr, variable displacement, swashplate pump
Max. flow	390 l/min.
Max. pressure	350 bar
<b>Hydraulic pump regulation and control</b>	Liebherr-Synchron-Comfort-system (LSC) with electronic engine speed sensing regulation, pressure and flow compensation, torque controlled swing drive priority
<b>Hydraulic tank</b>	170 l
<b>Hydraulic system</b>	max. 350 l
<b>Hydraulic oil filter</b>	1 main return filter with integrated partial micro filtration (5 µm)
<b>Cooling system</b>	Compact cooling system comprising cooling unit for water, hydraulic oil and charge air with stepless, thermostatically controlled fan
<b>MODE selection</b>	Adjustment of engine and hydraulic performance via a mode pre-selector to match application, e.g. for especially economical and environmentally friendly operation or for maximum digging performance and heavy-duty jobs
<b>Engine speed and performance setting</b>	Stepless adjustment of engine output and hydraulic power via engine speed



## Swing Drive

<b>Drive</b>	Liebherr swashplate motor with integrated brake valve and torque control
<b>Transmission</b>	Liebherr compact planetary reduction gears
<b>Swing ring</b>	Liebherr, sealed race ball bearing swing ring, internal teeth
<b>Swing speed</b>	0 – 10.0 RPM stepless
<b>Swing torque</b>	51 kNm
<b>Holding brake</b>	Wet multi-disc (spring applied, pressure released)



## Operator's Cab

<b>Cab</b>	ROPS safety cab structure (roll-over protection system according to ISO 12117-2:2008) with windscreen, totally or partially retractable (only upper part), under cab roof, work headlights integrated in the ceiling, a door with a sliding window (can be opened on both sides), large storing box and several stowing possibilities, shock-absorbing suspension, laminated right hand side and roof windows, all windows tinted, separate extensible window shades for the sun-roof window and windscreen, cigarette lighter and 24 V plug, 12 V plug, cup holder
<b>Operator's seat</b>	Liebherr-Comfort seat, airsprung with automatic weight adjustment, vertical and longitudinal seat damping including consoles and joysticks. Seat and armrests adjustable separately and in combination (adjustable in width, height and inclination), seat heating as standard
<b>Arm consoles</b>	Oscillating consoles with seat, tiltable console left
<b>Operation and displays</b>	Large high-resolution operating unit, intuitive, colour display with touchscreen, video-compatible, numerous setting, control and monitoring options, e.g. air conditioning control, fuel consumption, machine and attachment parameters
<b>Air-conditioning</b>	Automatic air-conditioning, recirculated air function, fast de-icing and demisting at the press of a button, air vents can be operated via a menu. Recirculated air and fresh air filters can be easily replaced and are accessible from the outside. Heating-cooling unit, designed for extreme outside temperatures, sensors for solar radiation, inside and outside temperatures The air conditioning system contains fluorinated greenhouse gases
Refrigerant	R134a
Global warming potential	1,430
Quantity at 25 °C*	1,260 g
CO <sub>2</sub> equivalent	1.80 t
<b>Vibration emission**</b>	
Hand/arm vibrations	< 2.5 m/s <sup>2</sup> , according with ISO 5349-1:2001
Whole-body vibrations	< 0.5 m/s <sup>2</sup>
Measuring inaccuracy	According with standard EN 12096:1997
<b>Noise emission</b>	
ISO 6396	L <sub>pA</sub> (inside cab) = 71 dB(A)
2000/14/EC	L <sub>WA</sub> (surround noise) = 103 dB(A)



## Undercarriage

<b>Versions</b>	
NLC	Gauge 2,000 mm
LC	Standard gauge 2,250 mm
<b>Drive</b>	Liebherr swashplate motor with brake valves on both sides
<b>Transmission</b>	Liebherr compact planetary reduction gear
<b>Maximum travel speed</b>	Low range 3.2 km/h High range 6.0 km/h
<b>Drawbar pull on crawler</b>	192 kN
<b>Track components</b>	B60, maintenance-free
<b>Track rollers/ Carrier rollers</b>	7/2
<b>Tracks</b>	Sealed and greased
<b>Track pads</b>	Triple grouser
<b>Holding brake</b>	Wet multi-disc (spring applied, pressure released)
<b>Brake valves</b>	Integrated into travel motor
<b>Lashing eyes</b>	Integrated



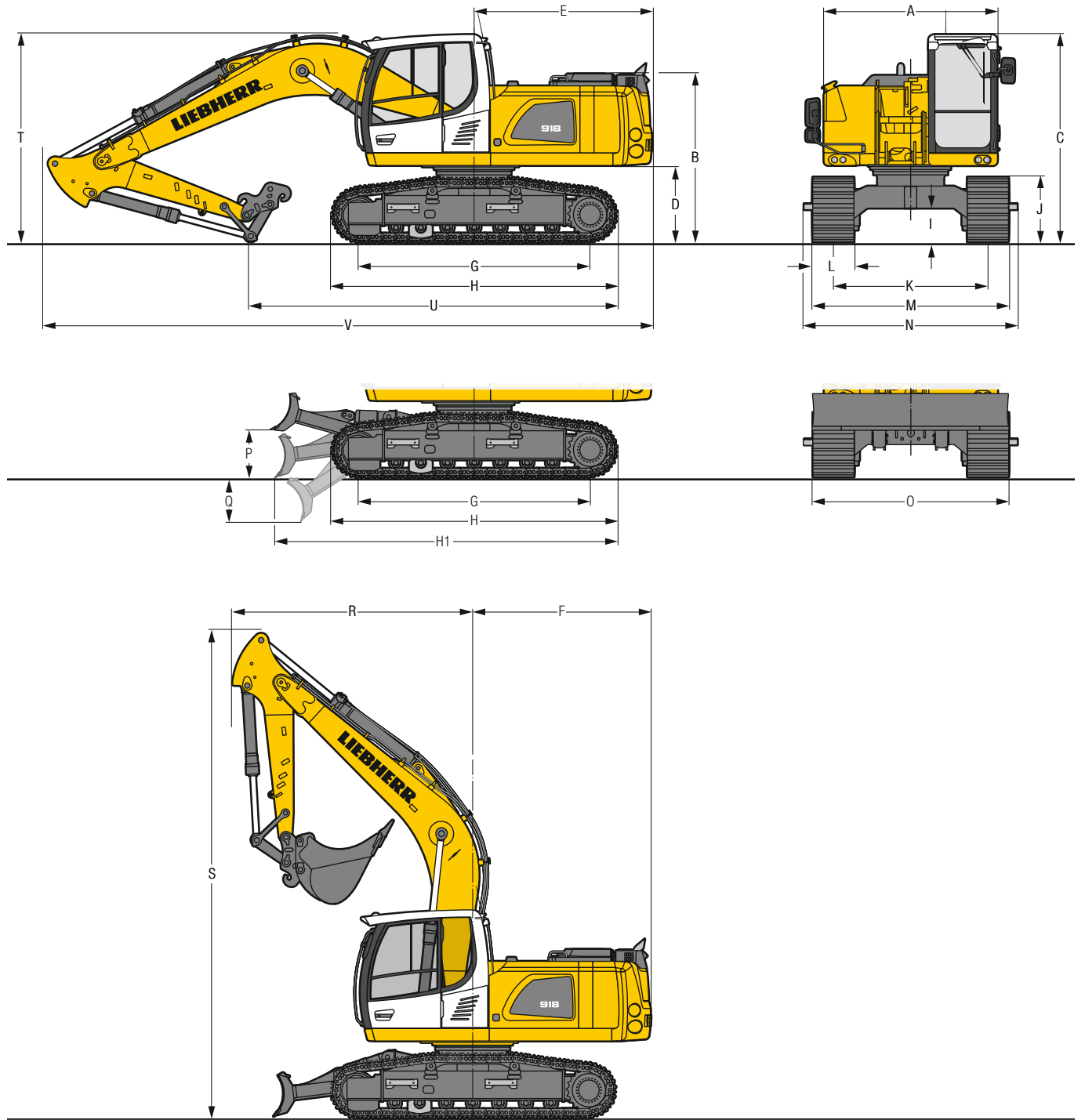
## Equipment

<b>Hydraulic cylinders</b>	Liebherr cylinders with seal and guidance systems
<b>Bearings</b>	Sealed, low maintenance
<b>Lubrication</b>	Liebherr central lubrication system

\* Valid for standard machine without operator's cab elevation and without height adjustable cab

\*\* For the risk assessment according to 2002/44/EC see ISO/TR 25398:2006

# Dimensions



	NLC			mm			NLC with blade			mm			LC			mm			LC with blade			mm			
<b>A</b>	Uppercarriage width				2,525						2,525						2,525						2,525		
<b>B</b>	Uppercarriage height				2,455						2,455						2,455						2,455		
<b>C</b>	Cab height				3,030						3,030						3,030						3,030		
<b>D</b>	Counterweight ground clearance				1,100						1,100						1,100						1,100		
<b>E</b>	Rear-end length				2,580						2,580						2,580						2,580		
<b>F</b>	Tail swing radius				2,580						2,580						2,580						2,580		
<b>G</b>	Wheelbase				3,370						3,370						3,370						3,370		
<b>H</b>	Undercarriage length				4,150						4,150						4,150						4,150		
<b>H1</b>	Undercarriage length with blade				–						5,040						–						4,965		
<b>I</b>	Undercarriage ground clearance				490						490						490						490		
<b>J</b>	Track height				955						955						955						955		
<b>K</b>	Track gauge				2,000						2,000						2,250						2,250		
<b>L</b>	Track pad width	500	600	750			500	600	750			500	600	750	900			500	600	750	900				
<b>M</b>	Width over tracks	2,500	2,600	2,750			2,500	2,600	2,750			2,750	2,850	3,000	3,150			2,750	2,850	3,000	3,150				
<b>N</b>	Width over steps	2,490	2,660*	2,660*			2,490	2,660*	2,660*			2,800	2,800	3,000*	3,100*			2,800	2,800	3,000*	3,100*				
<b>O</b>	Blade width				–						2,500			2,600			2,850						–		
<b>P</b>	Max. blade height				–						685						–						685		
<b>Q</b>	Max. blade depth				–						635						–						635		

\* width with removable steps

	Stick length m	Mono boom 5.20 m with quick coupler mm				Two-piece boom 5.40 m with quick coupler mm				Mono boom offset 5.20 m with quick coupler mm			
<b>R</b>	Front swing radius	2.25	3,550			2,900				3,250			
		2.45	3,550			2,950				3,250			
		2.65	3,550			3,000				3,300			
		3.05	3,550			2,600				3,300			
<b>S</b>	Height with boom up	2.25	7,100			7,850				7,300			
		2.45	3,050			3,050				3,100			
		2.65	3,100			3,100				3,200			
		3.05	3,150			3,150				3,250			
<b>T</b>	Boom height	2.25	2,950			3,000				3,000			
		2.45	5,350			6,000				5,500			
		2.65	5,200			5,850				5,400			
		3.05	5,050			5,750				5,300			
<b>U</b>	Length on ground	2.25	6,750			5,000				4,450			
		2.45	8,900			9,200				8,900			
		2.65	8,900			9,200				8,900			
		3.05	8,900			9,200				8,900			
<b>V</b>	Overall length	2.25	8,900			9,200				8,900			
		2.45	8,900			9,200				8,900			
		2.65	8,900			9,200				8,900			
		3.05	8,900			9,200				8,900			
	Bucket	1.00 m <sup>3</sup>				1.00 m <sup>3</sup>				1.00 m <sup>3</sup>			

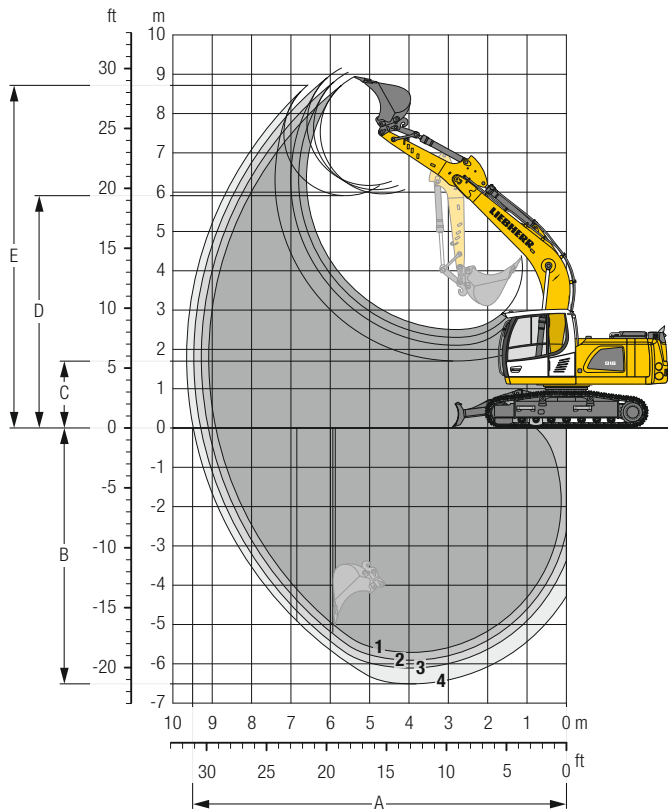
## Transport Dimensions removable elements disassembled

	Undercarriage / Stick m	Mono boom 5.20 m mm				Two-piece boom 5.40 m mm				Mono boom offset 5.20 m mm			
		500	600	750	900	500	600	750	900	500	600	750	900
Pad width		500	600	750	900	500	600	750	900	500	600	750	900
Transport width	NLC	2,525	2,600	2,750/2,850*	–	2,525	2,600	2,750/2,850*	–	2,525	2,600	2,750/2,850*	–
	LC	2,750/2,850*	2,850	3,000	3,150	2,750/2,850*	2,850	3,000	3,150	2,750/2,850*	2,850	3,000	3,150
Transport length	2.25	8,900				9,200				8,900			
	2.45	8,900				9,200				8,900			
	2.65	8,900				9,200				8,900			
	3.05	8,900				9,200				8,900			
Transport height	2.25	3,050				3,050				3,100			
	2.45	3,100				3,100				3,200			
	2.65	3,150				3,150				3,250			
	3.05	3,030				3,030				3,030			

\* with blade

# Backhoe Bucket

with Mono Boom 5.20 m and Counterweight 3.1 t



## Digging Envelope

with quick coupler		1	2	3	4
Stick length	m	2.25	2.45	2.65	3.05
A Max. reach at ground level	m	8.91	9.10	9.29	9.48
B Max. digging depth	m	5.71	5.91	6.11	6.51
C Min. dumping height	m	2.51	2.31	2.11	1.71
D Max. dumping height	m	6.17	6.06	5.96	5.91
E Max. cutting height	m	8.94	9.04	9.15	8.72

## Forces

without quick coupler		1	2	3	4
Stick digging force (ISO 6015)	kN	94	89	84	76
Bucket digging force (ISO 6015)	kN	135	135	135	135
Stick digging force (SAE J1179)	kN	89	85	80	73
Bucket digging force (SAE J1179)	kN	118	118	118	118

## Operating Weight and Ground Pressure

The operating weight includes the basic machine with counterweight 3.1 t, mono boom 5.20 m, stick 2.65 m, quick coupler SWA 48 and bucket 1.00 m<sup>3</sup> (715 kg).

Undercarriage		NLC			NLC with blade		
Pad width	mm	500	600	750	500	600	750
Weight	kg	19,550	19,800	20,200	21,100	21,350	21,750
Ground pressure	kg/cm <sup>2</sup>	0.54	0.45	0.37	0.58	0.49	0.40

Undercarriage		LC			LC with blade		
Pad width	mm	500	600	750	500	600	750
Weight	kg	19,600	19,850	20,250	21,200	21,450	21,850
Ground pressure	kg/cm <sup>2</sup>	0.54	0.45	0.37	0.58	0.49	0.40



**Buckets Machine stability per ISO 10567\* (75% of tipping capacity)**

	Cutting width mm	Capacity ISO 7451 m <sup>3</sup>	Weight <sup>3)</sup> kg	Weight <sup>4)</sup> kg	NLC-Undercarriage (with track pads 500 mm)								NLC-Undercarriage with blade (with track pads 500 mm)								LC-Undercarriage (with track pads 600 mm)								LC-Undercarriage with blade (with track pads 600 mm)							
					Stick length (m)				Stick length (m)				Stick length (m)				Stick length (m)				Stick length (m)				Stick length (m)											
					without quick coupler		with quick coupler		without quick coupler		with quick coupler		without quick coupler		with quick coupler		without quick coupler		with quick coupler		without quick coupler		with quick coupler		without quick coupler		with quick coupler									
2.25	2.45	2.65	3.05	2.25	2.45	2.65	3.05	2.25	2.45	2.65	3.05	2.25	2.45	2.65	3.05	2.25	2.45	2.65	3.05	2.25	2.45	2.65	3.05	2.25	2.45	2.65	3.05									
STD <sup>1)</sup>	650	0.55	480	515	▲	▲	▲	▲	▲	▲	▲	▲	▲	▲	▲	▲	▲	▲	▲	▲	▲	▲	▲	▲	▲	▲	▲	▲								
	850	0.60	520	550	▲	▲	▲	▲	▲	▲	▲	▲	▲	▲	▲	▲	▲	▲	▲	▲	▲	▲	▲	▲	▲	▲	▲	▲								
	1,050	0.80	600	635	▲	▲	▲	▲	▲	▲	▲	▲	▲	▲	▲	▲	▲	▲	▲	▲	▲	▲	▲	▲	▲	▲	▲	▲								
	1,250	1.00	685	715	▲	■	■	▲	■	▲	■	■	▲	▲	▲	■	■	▲	▲	▲	■	■	▲	▲	▲	▲	▲	▲	▲							
	1,400	1.15	755	785	▲	▲	■	△	■	■	△	△	■	■	▲	▲	■	■	▲	▲	■	■	▲	▲	▲	▲	▲	▲	▲							
HD <sup>2)</sup>	650	0.55	545	575	▲	▲	▲	▲	▲	▲	▲	▲	▲	▲	▲	▲	▲	▲	▲	▲	▲	▲	▲	▲	▲	▲	▲	▲								
	850	0.60	585	615	▲	▲	▲	▲	▲	▲	▲	▲	▲	▲	▲	▲	▲	▲	▲	▲	▲	▲	▲	▲	▲	▲	▲	▲								
	1,050	0.80	675	705	▲	▲	▲	▲	▲	▲	▲	■	▲	▲	▲	▲	▲	▲	▲	▲	▲	▲	▲	▲	▲	▲	▲	▲								
	1,250	1.00	770	800	■	■	▲	▲	■	▲	■	■	▲	▲	■	■	▲	▲	■	■	▲	▲	■	■	▲	▲	▲	▲								
	1,400	1.15	850	880	▲	■	△	△	■	△	△	△	■	▲	▲	■	■	▲	▲	■	■	▲	▲	■	■	▲	▲	▲	▲							

\* Indicated loads are based on ISO 10567, at maximum reach, and may be swung 360° on firm and even ground

<sup>1)</sup> Standard bucket with teeth Z 35

<sup>2)</sup> HD bucket with teeth Uni Z 35

<sup>3)</sup> Bucket for direct mounting

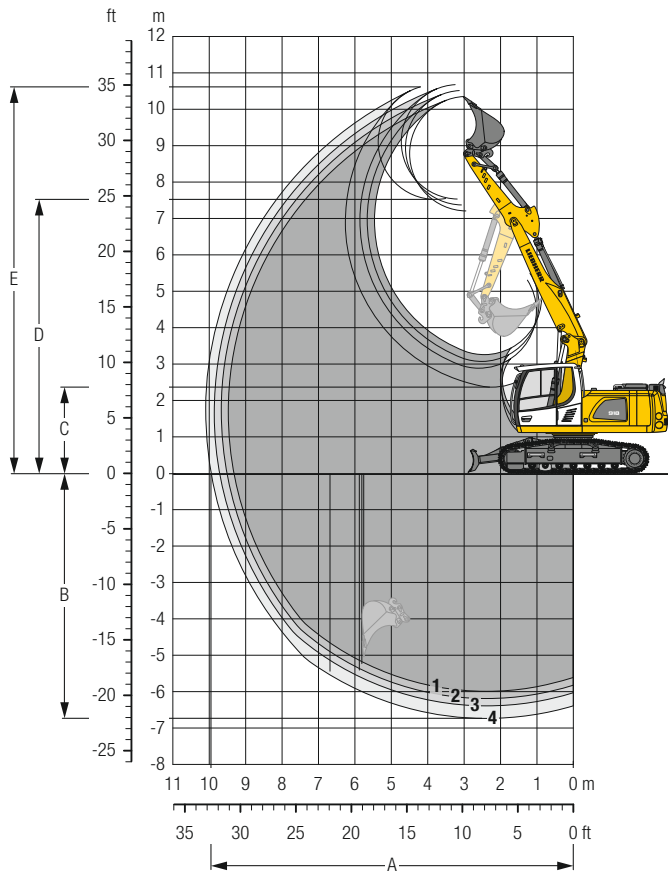
<sup>4)</sup> Bucket for mounting to quick coupler

Other buckets available upon request

Max. material weight ▲ = ≤ 2.0 t/m<sup>3</sup>, ■ = ≤ 1.8 t/m<sup>3</sup>, ▲ = ≤ 1.65 t/m<sup>3</sup>, ■ = ≤ 1.5 t/m<sup>3</sup>, △ = ≤ 1.2 t/m<sup>3</sup>, - = not authorised

# Backhoe Bucket

with Two-Piece Boom 5.40 m and Counterweight 3.1 t



## Digging Envelope

with quick coupler		1	2	3	4
Stick length	m	2.25	2.45	2.65	3.05
A Max. reach at ground level	m	9.32	9.52	9.71	9.95
B Max. digging depth	m	5.99	6.19	6.39	6.74
C Min. dumping height	m	3.26	3.07	2.89	2.37
D Max. dumping height	m	7.21	7.37	7.53	7.52
E Max. cutting height	m	10.34	10.51	10.68	10.61

## Forces

without quick coupler		1	2	3	4
Stick digging force (ISO 6015)	kN	94	89	84	76
Bucket digging force (ISO 6015)	kN	135	135	135	135
Stick digging force (SAE J1179)	kN	89	85	80	73
Bucket digging force (SAE J1179)	kN	118	118	118	118

## Operating Weight and Ground Pressure

The operating weight includes the basic machine with counterweight 3.1 t, two-piece boom 5.40 m, stick 2.65 m, quick coupler SWA 48 and bucket 1.00 m<sup>3</sup> (715 kg).

Undercarriage		NLC			NLC with blade		
Pad width	mm	500	600	750	500	600	750
Weight	kg	20,350	20,600	21,000	21,900	22,150	22,550
Ground pressure	kg/cm <sup>2</sup>	0.56	0.47	0.39	0.60	0.51	0.41

Undercarriage		LC			LC with blade		
Pad width	mm	500	600	750	500	600	750
Weight	kg	20,400	20,650	21,050	22,000	22,250	22,650
Ground pressure	kg/cm <sup>2</sup>	0.56	0.47	0.39	0.60	0.51	0.41

**Buckets Machine stability per ISO 10567\* (75% of tipping capacity)**

	Cutting width mm	Capacity ISO 7451 m <sup>3</sup>	Weight <sup>3)</sup> kg	Weight <sup>4)</sup> kg	NLC-Undercarriage (with track pads 500 mm)								NLC-Undercarriage with blade (with track pads 500 mm)								LC-Undercarriage (with track pads 600 mm)								LC-Undercarriage with blade (with track pads 600 mm)							
					Stick length (m)				Stick length (m)				Stick length (m)				Stick length (m)				Stick length (m)				Stick length (m)											
					without quick coupler		with quick coupler		without quick coupler		with quick coupler		without quick coupler		with quick coupler		without quick coupler		with quick coupler		without quick coupler		with quick coupler		without quick coupler		with quick coupler									
2.25	2.45	2.65	3.05	2.25	2.45	2.65	3.05	2.25	2.45	2.65	3.05	2.25	2.45	2.65	3.05	2.25	2.45	2.65	3.05	2.25	2.45	2.65	3.05	2.25	2.45	2.65	3.05									
STD <sup>1)</sup>	650	0.55	480	515	▲	▲	▲	▲	▲	▲	▲	▲	▲	▲	▲	▲	▲	▲	▲	▲	▲	▲	▲	▲	▲	▲	▲	▲								
	850	0.60	520	550	▲	▲	▲	▲	▲	▲	▲	▲	▲	▲	▲	▲	▲	▲	▲	▲	▲	▲	▲	▲	▲	▲	▲	▲								
	1,050	0.80	600	635	▲	▲	■	▲	■	▲	■	▲	■	▲	■	▲	■	▲	■	▲	■	▲	■	▲	■	▲	■	▲								
	1,250	1.00	685	715	▲	■	▲	▲	▲	▲	▲	▲	■	▲	■	▲	▲	▲	■	▲	■	▲	■	▲	■	▲	■	▲								
	1,400	1.15	755	785	△	△	△	-	△	-	-	-	■	△	△	△	△	△	△	-	▲	■	■	△	■	△	△	△								
HD <sup>2)</sup>	650	0.55	545	575	▲	▲	▲	▲	▲	▲	▲	▲	▲	▲	▲	▲	▲	▲	▲	▲	▲	▲	▲	▲	▲	▲	▲	▲								
	850	0.60	585	615	▲	▲	▲	▲	▲	▲	▲	▲	▲	▲	▲	▲	▲	▲	▲	▲	▲	▲	▲	▲	▲	▲	▲	▲								
	1,050	0.80	675	705	▲	■	■	▲	■	▲	■	▲	■	▲	■	▲	■	▲	■	▲	■	▲	■	▲	■	▲	■	▲								
	1,250	1.00	770	800	■	△	△	△	△	△	△	-	▲	▲	■	△	■	■	△	△	■	■	▲	■	▲	■	▲	■								
	1,400	1.15	850	880	△	△	-	-	-	-	-	-	■	△	△	△	△	△	-	▲	■	△	△	■	△	△	△	△								

\* Indicated loads are based on ISO 10567, at maximum reach, and may be swung 360° on firm and even ground

<sup>1)</sup> Standard bucket with teeth Z 35

<sup>2)</sup> HD bucket with teeth Uni Z 35

<sup>3)</sup> Bucket for direct mounting

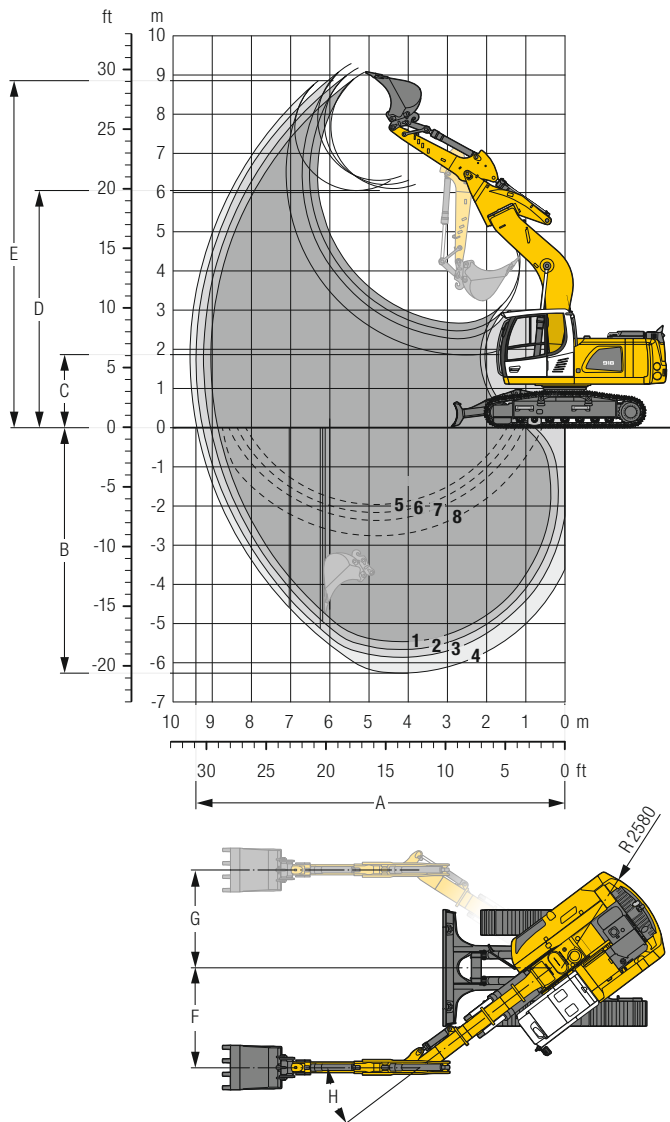
<sup>4)</sup> Bucket for mounting to quick coupler

Other buckets available upon request

Max. material weight ▲ = ≤ 2.0 t/m<sup>3</sup>, ■ = ≤ 1.8 t/m<sup>3</sup>, ▲ = ≤ 1.65 t/m<sup>3</sup>, ■ = ≤ 1.5 t/m<sup>3</sup>, △ = ≤ 1.2 t/m<sup>3</sup>, - = not authorised

# Backhoe Bucket

with Mono Boom Offset 5.20 m and Counterweight 3.1 t



## Digging Envelope

with quick coupler		1	2	3	4
Stick length	m	2.25	2.45	2.65	3.05
A Max. reach at ground level	m	8.85	9.04	9.23	9.39
B Max. digging depth	m	5.47	5.67	5.87	6.27
C Min. dumping height	m	2.67	2.47	2.27	1.86
D Max. dumping height	m	6.31	6.21	6.10	6.05
E Max. cutting height	m	9.08	9.18	9.29	8.86
F Max. offset right	m	2.44			
G Max. offset left	m	2.41			
H Max. offset angle	°	37			

- 1 with stick 2.25 m  
 2 with stick 2.45 m  
 3 with stick 2.65 m  
 4 with stick 3.05 m  
 with set straight boom
- 5 with stick 2.25 m  
 6 with stick 2.45 m  
 7 with stick 2.65 m  
 8 with stick 3.05 m  
 at max. attachment offset  
 with vertical ditch walls

## Forces

without quick coupler		1	2	3	4
Stick digging force (ISO 6015)	kN	94	89	84	76
Bucket digging force (ISO 6015)	kN	135	135	135	135
Stick digging force (SAE J1179)	kN	89	85	80	73
Bucket digging force (SAE J1179)	kN	118	118	118	118

## Operating Weight and Ground Pressure

The operating weight includes the basic machine with counterweight 3.1 t, mono boom offset 5.20 m, stick 2.65 m, quick coupler SWA 48 and bucket 1.00 m<sup>3</sup> (715 kg).

Undercarriage		NLC			NLC with blade		
Pad width	mm	500	600	750	500	600	750
Weight	kg	20,150	20,400	20,800	21,700	21,950	22,350
Ground pressure	kg/cm <sup>2</sup>	0.55	0.47	0.38	0.59	0.50	0.41

Undercarriage		LC			LC with blade		
Pad width	mm	500	600	750	500	600	750
Weight	kg	20,200	20,450	20,850	21,800	22,050	22,450
Ground pressure	kg/cm <sup>2</sup>	0.55	0.47	0.38	0.59	0.50	0.41

**Buckets Machine stability per ISO 10567\* (75% of tipping capacity)**

	Cutting width mm	Capacity ISO 7451 m <sup>3</sup>	Weight <sup>3)</sup> kg	Weight <sup>4)</sup> kg	NLC-Undercarriage (with track pads 500 mm)				NLC-Undercarriage with blade (with track pads 500 mm)				LC-Undercarriage (with track pads 600 mm)				LC-Undercarriage with blade (with track pads 600 mm)																			
					Stick length (m)								Stick length (m)								Stick length (m)								Stick length (m)							
					without quick coupler				with quick coupler				without quick coupler				with quick coupler				without quick coupler				with quick coupler				without quick coupler				with quick coupler			
	2.25	2.45	2.65	3.05	2.25	2.45	2.65	3.05	2.25	2.45	2.65	3.05	2.25	2.45	2.65	3.05	2.25	2.45	2.65	3.05	2.25	2.45	2.65	3.05	2.25	2.45	2.65	3.05	2.25	2.45	2.65	3.05				
STD <sup>1)</sup>	650	0.55	480	515	▲	▲	▲	▲	▲	▲	▲	▲	▲	▲	▲	▲	▲	▲	▲	▲	▲	▲	▲	▲	▲	▲	▲	▲	▲	▲	▲					
	850	0.60	520	550	▲	▲	▲	▲	▲	▲	▲	▲	▲	▲	▲	▲	▲	▲	▲	▲	▲	▲	▲	▲	▲	▲	▲	▲	▲	▲	▲	▲				
	1,050	0.80	600	635	▲	▲	▲	▲	▲	▲	■	■	▲	▲	▲	▲	▲	▲	▲	▲	▲	▲	▲	▲	▲	▲	▲	▲	▲	▲	▲	▲				
	1,250	1.00	685	715	■	▲	▲	■	▲	■	■	■	▲	▲	■	■	■	■	▲	▲	■	■	■	■	▲	▲	▲	▲	▲	▲	▲	▲				
HD <sup>2)</sup>	1,400	1.15	755	785	■	■	△	△	△	△	△	△	△	▲	▲	■	■	▲	▲	■	■	■	■	▲	▲	▲	▲	▲	▲	▲	▲					
	650	0.55	545	575	▲	▲	▲	▲	▲	▲	▲	▲	▲	▲	▲	▲	▲	▲	▲	▲	▲	▲	▲	▲	▲	▲	▲	▲	▲	▲	▲	▲				
	850	0.60	585	615	▲	▲	▲	▲	▲	▲	▲	▲	▲	▲	▲	▲	▲	▲	▲	▲	▲	▲	▲	▲	▲	▲	▲	▲	▲	▲	▲	▲				
	1,050	0.80	675	705	▲	▲	▲	▲	▲	▲	■	■	▲	▲	▲	▲	▲	▲	▲	▲	▲	▲	▲	▲	▲	▲	▲	▲	▲	▲	▲	▲				
	1,250	1.00	770	800	■	▲	■	■	▲	■	■	■	▲	▲	■	■	■	■	▲	▲	■	■	■	■	▲	▲	▲	▲	▲	▲	▲	▲				
	1,400	1.15	850	880	■	▲	△	△	△	△	△	△	△	▲	■	■	△	△	△	△	▲	▲	▲	▲	▲	▲	▲	▲	▲	▲	▲	▲				

\* Indicated loads are based on ISO 10567, at maximum reach, and may be swung 360° on firm and even ground

<sup>1)</sup> Standard bucket with teeth Z 35

<sup>2)</sup> HD bucket with teeth Uni Z 35

<sup>3)</sup> Bucket for direct mounting

<sup>4)</sup> Bucket for mounting to quick coupler

Other buckets available upon request

Max. material weight ▲ = ≤ 2.0 t/m<sup>3</sup>, ■ = ≤ 1.8 t/m<sup>3</sup>, ▲ = ≤ 1.65 t/m<sup>3</sup>, ■ = ≤ 1.5 t/m<sup>3</sup>, △ = ≤ 1.2 t/m<sup>3</sup>, – = not authorised

# Lift Capacities

with Mono Boom 5.20 m, Counterweight 3.1 t and Track Pads 500 mm/600 mm

Stick 2.25 m											Stick 2.45 m												
Under-carriage	m	3.0 m		4.5 m		6.0 m		7.5 m		m	Under-carriage	m	3.0 m		4.5 m		6.0 m		7.5 m		m		
		↕	↔	↕	↔	↕	↔	↕	↔				↕	↔	↕	↔	↕	↔	↕	↔		↕	↔
NLC <sup>(1)</sup>	7.5									4.2*	4.2*	4.7									3.8*	3.8*	5.0
	6.0									3.4	3.7*	6.2									3.2	3.3*	6.4
	4.5									2.8	3.5*	7.0									2.6	3.2*	7.2
	3.0									2.4	3.6*	7.4									2.3	3.2*	7.6
	1.5									2.3	3.8*	7.5									2.2	3.4*	7.7
	0									2.4	4.1	7.3									2.3	3.8*	7.5
	-1.5	8.3	10.2*							2.7	4.6	6.7									2.5	4.3	6.9
-3.0	8.6	10.8*							3.4	5.7*	5.7									3.1	5.4	6.0	
-4.5																							
NLC <sup>(1)</sup> Blade up	7.5									4.2*	4.2*	4.7									3.8*	3.8*	5.0
	6.0									3.7	3.7*	6.2									3.3*	3.3*	6.4
	4.5									3.0	3.5*	7.0									2.8	3.2*	7.2
	3.0									2.6	3.6*	7.4									2.5	3.2*	7.6
	1.5									2.5	3.8*	7.5									2.4	3.4*	7.7
	0									2.6	4.1	7.3									2.5	3.8*	7.5
	-1.5	9.0	10.2*							2.9	4.6	6.7									2.7	4.4	6.9
-3.0	9.2	10.8*							3.6	5.7*	5.7									3.4	5.5	6.0	
-4.5																							
NLC <sup>(1)</sup> Blade down	7.5									4.2*	4.2*	4.7									3.8*	3.8*	5.0
	6.0									3.7*	3.7*	6.2									3.3*	3.3*	6.4
	4.5									3.1	3.5*	7.0									2.9	3.2*	7.2
	3.0									2.8	3.6*	7.4									2.6	3.2*	7.6
	1.5									2.6	3.8*	7.5									2.5	3.4*	7.7
	0									2.7	4.3*	7.3									2.6	3.8*	7.5
	-1.5	9.5	10.2*							3.0	5.2*	6.7									2.9	4.6*	6.9
-3.0	9.7	10.8*							3.8	5.7*	5.7									3.6	5.6*	6.0	
-4.5																							
LC	7.5									4.2*	4.2*	4.7									3.8*	3.8*	5.0
	6.0									3.7*	3.7*	6.2									3.3*	3.3*	6.4
	4.5									3.2	3.5*	7.0									3.0	3.2*	7.2
	3.0									2.8	3.6*	7.4									2.6	3.2*	7.6
	1.5									2.7	3.8*	7.5									2.6	3.4*	7.7
	0									2.8	4.1	7.3									2.6	3.8*	7.5
	-1.5	10.0	10.2*							3.1	4.6	6.7									2.9	4.4	6.9
-3.0	10.3	10.8*							3.9	5.7*	5.7									3.6	5.5	6.0	
-4.5																							
LC Blade up	7.5									4.2*	4.2*	4.7									3.8*	3.8*	5.0
	6.0									3.7*	3.7*	6.2									3.3*	3.3*	6.4
	4.5									3.4	3.5*	7.0									3.2*	3.2*	7.2
	3.0									3.0	3.6*	7.4									2.9	3.2*	7.6
	1.5									2.9	3.8*	7.5									2.8	3.4*	7.7
	0									3.0	4.2	7.3									2.9	3.8*	7.5
	-1.5	10.2*	10.2*							3.3	4.7	6.7									3.2	4.5	6.9
-3.0	10.8*	10.8*							4.2	5.7*	5.7									4.0	5.6	6.0	
-4.5																							
LC Blade down	7.5									4.2*	4.2*	4.7									3.8*	3.8*	5.0
	6.0									3.7*	3.7*	6.2									3.3*	3.3*	6.4
	4.5									3.5*	3.5*	7.0									3.2*	3.2*	7.2
	3.0									3.2	3.6*	7.4									3.1	3.2*	7.6
	1.5									3.1	3.8*	7.5									3.0	3.4*	7.7
	0									3.2	4.3*	7.3									3.0	3.8*	7.5
	-1.5	10.2*	10.2*							3.5	5.2*	6.7									3.4	4.6*	6.9
-3.0	10.8*	10.8*							4.5	5.7*	5.7									4.2	5.6*	6.0	
-4.5																							

↕ Height   ↔ Can be slewed through 360°   In longitudinal position of undercarriage   Max. reach   \* Limited by hydr. capacity

The load values are quoted in tons (t) at stick end (without bucket), and may be swung 360° on firm and even ground. Adjacent values are valid for the undercarriage when in the longitudinal position. Capacities are valid for 600 mm wide track pads. Indicated loads are based on ISO 10567 standard and do not exceed 75% of tipping or 87% of hydraulic capacity (indicated via \*). Without bucket cylinder, link and lever the lift capacities will increase by 285 kg. Lifting capacity of the excavator is limited by machine stability and hydraulic capacity.

According to European Standard, EN 474-5: In the European Union excavators have to be equipped with an overload warning device, a load diagram and automatic safety check valves on hoist cylinders and stick cylinder(s), when they are used for lifting operations which require the use of lifting accessories.

<sup>1)</sup> Values are calculated with 500 mm wide track pads for the NLC-Undercarriage

### Stick 2.65 m

Under-carriage	3.0 m		4.5 m		6.0 m		7.5 m		Max. reach				
	m	↕	↕	↕	↕	↕	↕	↕	m	m			
NLC <sup>1)</sup>	7.5								3.4*	3.4*	5.3		
	6.0					3.7	5.1*		3.0*	3.0*	6.6		
	4.5					3.6	5.6*		2.5	2.9*	7.4		
	3.0				5.2	7.9*	3.4	5.7	2.4	2.2	2.9*	7.8	
	1.5				4.7	8.6	3.2	5.5	2.3	2.1	3.1*	7.9	
	0	5.4*	5.4*	4.5	8.3	3.0	5.3	2.2	2.2	2.2	3.5*	7.7	
NLC <sup>1)</sup> Blade up	-1.5	8.2	9.4*	4.4	8.2	3.0	5.3		2.4	4.1	7.2		
	-3.0	8.4	11.8*	4.5	8.3	3.1	5.3		2.9	5.1	6.2		
	-4.5								5.0	5.3*	4.4		
	7.5								3.4*	3.4*	5.3		
	6.0					3.9	5.1*		3.0*	3.0*	6.6		
	4.5					3.8	5.6*		2.7	2.9*	7.4		
NLC <sup>1)</sup> Blade down	3.0				5.5	7.9*	3.6	5.8	2.6	4.1	2.4	2.9*	7.8
	1.5				5.1	8.7	3.4	5.6	2.5	4.0	2.3	3.1*	7.9
	0	5.4*	5.4*	4.8	8.4	3.3	5.4	2.4	2.4	3.5*	7.7		
	-1.5	8.8	9.4*	4.8	8.3	3.2	5.3		2.6	4.1*	7.2		
	-3.0	9.0	11.8*	4.8	8.4	3.3	5.4		3.2	5.2	6.2		
	-4.5								5.3*	5.3*	4.4		
LC	7.5								3.4*	3.4*	5.3		
	6.0					4.1	5.1*		3.0*	3.0*	6.6		
	4.5					4.0	5.6*		2.8	2.9*	7.4		
	3.0				5.8	7.9*	3.8	6.3*	2.7	4.7*	2.5	2.9*	7.8
	1.5				5.3	9.4*	3.6	6.9*	2.6	5.7*	2.4	3.1*	7.9
	0	5.4*	5.4*	5.1	10.0*	3.4	7.3*		2.5	5.2*	2.5	3.5*	7.7
LC Blade up	-1.5	9.3	9.4*	5.0	9.7*	3.4	7.1*		2.7	4.1*	7.2		
	-3.0	9.5	11.8*	5.1	8.4*	3.5	5.9*		3.3	5.5*	6.2		
	-4.5								5.3*	5.3*	4.4		
	7.5								3.4*	3.4*	5.3		
	6.0					4.2	5.1*		3.0*	3.0*	6.6		
	4.5					4.1	5.6*		2.9	2.9*	7.4		
LC Blade down	3.0				6.0	7.9*	3.9	5.8	2.8	4.1	2.6	2.9*	7.8
	1.5				5.5	8.7	3.7	5.6	2.7	4.0	2.5	3.1*	7.9
	0	5.4*	5.4*	5.3	8.4	3.5	5.4	2.6	3.9	2.5	3.5*	7.7	
	-1.5	9.4*	9.4*	5.2	8.3	3.5	5.4		2.8	4.1*	7.2		
	-3.0	10.0	11.8*	5.3	8.4	3.6	5.4		3.4	5.2	6.2		
	-4.5								5.3*	5.3*	4.4		

### Stick 3.05 m

Under-carriage	3.0 m		4.5 m		6.0 m		7.5 m		Max. reach						
	m	↕	↕	↕	↕	↕	↕	↕	m	m					
NLC <sup>1)</sup>	7.5								2.7*	2.7*	5.6				
	6.0					3.7	4.3*		2.5*	2.5*	6.8				
	4.5					3.6	5.3*	2.5	2.8*	2.4	2.4*	7.6			
	3.0				9.7	11.2*	5.2	7.4*	3.4	5.7	2.4	4.0	2.2	2.5*	8.0
	1.5				6.8*	6.8*	4.8	8.6	3.2	5.5	2.3	3.9	2.0	2.7*	8.1
	0	7.1*	7.1*	4.5	8.3	3.0	5.3	2.2	3.8	2.1	3.1*	7.9			
NLC <sup>1)</sup> Blade up	-1.5	8.0	9.9*	4.4	8.1	2.9	5.2		2.2	3.9*	7.4				
	-3.0	8.2	12.7*	4.4	8.2	3.0	5.2		2.7	4.7	6.4				
	-4.5	8.5	9.0*	4.6	6.3*				4.1	5.6*	4.9				
	7.5								2.7*	2.7*	5.6				
	6.0					4.0	4.3*		2.5*	2.5*	6.8				
	4.5					3.9	5.3*	2.7	2.8*	2.4*	2.4*	7.6			
NLC <sup>1)</sup> Blade down	3.0	10.3	11.2*	5.6	7.4*	3.7	5.8	2.6	4.1	2.3	2.5*	8.0			
	1.5	6.8*	6.8*	5.1	8.8	3.4	5.6	2.5	4.0	2.2	2.7*	8.1			
	0	7.1*	7.1*	4.8	8.4	3.3	5.4	2.4	3.9	2.2	3.1*	7.9			
	-1.5	8.7	9.9*	4.7	8.3	3.2	5.3		2.4	3.9*	7.4				
	-3.0	8.8	12.7*	4.8	8.3	3.2	5.3		2.9	4.8	6.4				
	-4.5	9.0*	9.0*	5.0	6.3*				4.4	5.6*	4.9				
LC	7.5								2.7*	2.7*	5.6				
	6.0					4.1	4.3*		2.5*	2.5*	6.8				
	4.5					4.0	5.3*	2.8	2.8*	2.4*	2.4*	7.6			
	3.0	10.9	11.2*	5.8	7.4*	3.8	5.9*	2.7	4.4*	2.4	2.5*	8.0			
	1.5	6.8*	6.8*	5.4	9.0*	3.6	6.7*	2.6	5.5*	2.3	2.7*	8.1			
	0	7.1*	7.1*	5.1	9.9*	3.4	7.2*	2.5	5.5*	2.3	3.1*	7.9			
LC Blade up	-1.5	9.2	9.9*	5.0	9.8*	3.3	7.2*		2.6	3.9*	7.4				
	-3.0	9.3	12.7*	5.0	8.9*	3.4	6.4*		3.1	5.5*	6.4				
	-4.5	9.0*	9.0*	5.2	6.3*				4.6	5.6*	4.9				
	7.5								2.7*	2.7*	5.6				
	6.0					4.2	4.3*		2.5*	2.5*	6.8				
	4.5					4.1	5.3*	2.8*	2.8*	2.4*	2.4*	7.6			
LC Blade down	3.0	11.2*	11.2*	6.0	7.4*	3.9	5.8	2.8	4.1	2.5	2.5*	8.0			
	1.5	6.8*	6.8*	5.6	8.8	3.7	5.6	2.7	4.0	2.4	2.7*	8.1			
	0	7.1*	7.1*	5.2	8.4	3.5	5.4	2.6	3.9	2.4	3.1*	7.9			
	-1.5	9.7	9.9*	5.1	8.3	3.4	5.3		2.6	3.9*	7.4				
	-3.0	9.9	12.7*	5.2	8.3	3.5	5.3		3.2	4.8	6.4				
	-4.5	9.0*	9.0*	5.4	6.3*				4.8	5.6*	4.9				

↕ Height   ↕ Can be slewed through 360°   ↕ In longitudinal position of undercarriage   🚧 Max. reach   \* Limited by hydr. capacity

The load values are quoted in tons (t) at stick end (without bucket), and may be swung 360° on firm and even ground. Adjacent values are valid for the undercarriage when in the longitudinal position. Capacities are valid for 600 mm wide track pads. Indicated loads are based on ISO 10567 standard and do not exceed 75% of tipping or 87% of hydraulic capacity (indicated via \*). Without bucket cylinder, link and lever the lift capacities will increase by 285 kg. Lifting capacity of the excavator is limited by machine stability and hydraulic capacity.


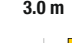


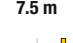

According to European Standard, EN 474-5: In the European Union excavators have to be equipped with an overload warning device, a load diagram and automatic safety check valves on hoist cylinders and stick cylinder(s), when they are used for lifting operations which require the use of lifting accessories.

<sup>1)</sup> Values are calculated with 500 mm wide track pads for the NLC-Undercarriage


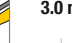
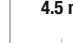
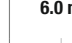
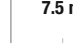

# Lift Capacities

with Two-Piece Boom 5.40 m, Counterweight 3.1 t and Track Pads 500 mm/600 mm

## Stick 2.25 m

		3.0 m		4.5 m		6.0 m		7.5 m			
Under-carriage	m										
		LC	LC	LC	LC	LC	LC	LC	LC	LC	LC
NLC(°) Blade up	9.0										
	7.5			5.9	6.8*					4.6	4.8*
	6.0			5.9	7.0*	3.7	6.1			3.1	4.1*
	4.5	10.6	11.6*	5.8	8.2*	3.8	6.0			2.5	3.9*
	3.0	10.1	11.6*	5.6	9.1	3.8	6.0	2.4	4.1	2.2	3.8
	1.5	10.0	12.7*	5.6	9.0	3.6	6.0	2.3	4.0	2.1	3.6
NLC(°) Blade down	9.0										
	7.5			6.2	6.8*					4.8*	4.8*
	6.0			6.3	7.0*	3.9	6.2			3.3	4.1*
	4.5	11.2	11.6*	6.1	8.2*	4.0	6.1			2.7	3.9*
	3.0	10.7	11.6*	6.0	9.2	4.0	6.0	2.6	4.1	2.4	3.8
	1.5	10.5	12.7*	5.9	9.1	3.9	6.1	2.5	4.1	2.3	3.7
LC Blade up	9.0										
	7.5			6.7	6.8*					4.8*	4.8*
	6.0			6.7	7.0*	4.2	6.2			3.5	4.1*
	4.5	11.6*	11.6*	6.6	8.2*	4.3	6.1			2.9	3.9*
	3.0	11.6*	11.6*	6.4	9.2	4.3	6.0	2.8	4.1	2.5	3.8
	1.5	11.5	12.7*	6.3	9.1	4.2	6.1	2.7	4.1	2.4	3.7
LC Blade down	9.0										
	7.5			6.8*	6.8*					4.8*	4.8*
	6.0			7.0*	7.0*	4.5	6.2			3.8	4.1*
	4.5	11.6*	11.6*	7.0	8.2*	4.6	6.2			3.1	3.9*
	3.0	11.6*	11.6*	6.8	9.3	4.6	6.1	3.0	4.2	2.8	3.8*
	1.5	12.2	12.7*	6.7	9.2	4.5	6.1	2.9	4.1	2.6	3.8

## Stick 2.45 m

		3.0 m		4.5 m		6.0 m		7.5 m			
Under-carriage	m										
		LC	LC	LC	LC	LC	LC	LC	LC	LC	LC
NLC(°) Blade up	9.0										
	7.5			5.9	6.3*					4.2	4.3*
	6.0			6.0	6.3*	3.7	6.1*			2.9	3.7*
	4.5	8.2*	8.2*	5.8	7.7*	3.8	6.0	2.4	4.1	2.4	3.5*
	3.0	10.1	11.7*	5.6	9.1	3.8	5.9	2.4	4.1	2.1	3.5*
	1.5	10.0	12.6*	5.6	9.0	3.7	5.9	2.3	4.0	2.0	3.5
NLC(°) Blade down	9.0										
	7.5			6.3	6.3*					4.3*	4.3*
	6.0			6.3	6.3*	4.0	6.1*			3.1	3.7*
	4.5	8.2*	8.2*	6.1	7.7*	4.1	6.1	2.6	4.1*	2.5	3.5*
	3.0	10.7	11.7*	6.0	9.2	4.1	6.0	2.6	4.1	2.3	3.5*
	1.5	10.5	12.6*	5.9	9.1	3.9	6.0	2.5	4.1	2.2	3.5
LC Blade up	9.0										
	7.5			6.3*	6.3*					4.3*	4.3*
	6.0			6.3*	6.3*	4.1	6.1*			3.2	3.7*
	4.5	8.2*	8.2*	6.4	7.7*	4.2	6.5*	2.7	4.1*	2.7	3.5*
	3.0	11.1	11.7*	6.2	9.3*	4.2	7.1*	2.7	5.9*	2.4	3.5*
	1.5	11.0	12.6*	6.1	10.4*	4.1	7.5*	2.7	6.0*	2.3	3.6*
LC Blade down	9.0										
	7.5			6.3*	6.3*					4.3*	4.3*
	6.0			6.3*	6.3*	4.2	6.1*			3.3	3.7*
	4.5	8.2*	8.2*	6.6	7.7*	4.3	6.1	2.8	4.1*	2.7	3.5*
	3.0	11.7*	11.7*	6.4	9.2	4.3	6.0	2.8	4.1	2.4	3.5*
	1.5	11.5	12.6*	6.3	9.1	4.2	6.0	2.7	4.1	2.3	3.5



\* Limited by hydr. capacity

The load values are quoted in tons (t) at stick end (without bucket), and may be swung 360° on firm and even ground. Adjacent values are valid for the undercarriage when in the longitudinal position. Capacities are valid for 600 mm wide track pads with adjusting cylinder in optimal position. Indicated loads are based on ISO 10567 standard and do not exceed 75% of tipping or 87% of hydraulic capacity (indicated via \*). Without bucket cylinder, link and lever the lift capacities will increase by 285 kg. Lifting capacity of the excavator is limited by machine stability and hydraulic capacity.

According to European Standard, EN 474-5: In the European Union excavators have to be equipped with an overload warning device, a load diagram and automatic safety check valves on hoist cylinders and stick cylinder(s), when they are used for lifting operations which require the use of lifting accessories.

1) Values are calculated with 500 mm wide track pads for the NLC-Undercarriage



## Stick 2.65 m

Under-carriage	3.0 m		4.5 m		6.0 m		7.5 m		m		
	m	m	m	m	m	m	m	m			
NLC <sup>(*)</sup>	9.0								5.5* 5.5*	<b>3.4</b>	
	7.5			5.9*	5.9*				3.8 3.9*	<b>5.8</b>	
	6.0			5.7*	5.7*	3.8	5.7*		2.7 3.4*	<b>7.0</b>	
	4.5	6.4*	6.4*	5.8	6.8*	3.8	6.0	2.4	4.1	2.2 3.2*	<b>7.8</b>
	3.0	10.2	11.6*	5.6	9.1	3.8	5.9	2.4	4.1	2.0 3.2*	<b>8.2</b>
	1.5	9.9	12.4*	5.5	8.9	3.7	5.9	2.4	4.0	1.9 3.3*	<b>8.3</b>
	0	9.8	14.6*	5.4	9.0	3.5	5.9	2.3	3.9	1.9 3.4	<b>8.1</b>
	-1.5	9.3	16.9*	5.1	9.2	3.2	5.6	2.2	3.8	2.1 3.7	<b>7.6</b>
	-3.0	9.2	17.5*	4.8	8.8	3.0	5.4			2.5 4.2*	<b>6.8</b>
	-4.5	9.0	13.1*							4.9 6.7*	<b>4.4</b>
NLC <sup>(*)</sup> Blade up	9.0								5.5* 5.5*	<b>3.4</b>	
	7.5			5.9*	5.9*				3.9* 3.9*	<b>5.8</b>	
	6.0			5.7*	5.7*	4.0	5.7*		2.9 3.4*	<b>7.0</b>	
	4.5	6.4*	6.4*	6.2	6.8*	4.1	6.1	2.6	4.2	2.4 3.2*	<b>7.8</b>
	3.0	10.7	11.6*	6.0	9.1*	4.0	6.0	2.6	4.2	2.2 3.2*	<b>8.2</b>
	1.5	10.5	12.4*	5.9	9.0	4.0	6.0	2.6	4.1	2.1 3.3*	<b>8.3</b>
	0	10.4	14.6*	5.7	9.1	3.8	6.0	2.4	4.0	2.1 3.5	<b>8.1</b>
	-1.5	9.9	16.9*	5.5	9.3	3.5	5.7	2.3	3.9	2.3 3.8	<b>7.6</b>
	-3.0	9.8	17.5*	5.2	9.0	3.3	5.5			2.7 4.2*	<b>6.8</b>
	-4.5	9.6	13.1*							5.3 6.7*	<b>4.4</b>
NLC <sup>(*)</sup> Blade down	9.0								5.5* 5.5*	<b>3.4</b>	
	7.5			5.9*	5.9*				3.9* 3.9*	<b>5.8</b>	
	6.0			5.7*	5.7*	4.2	5.7*		3.1 3.4*	<b>7.0</b>	
	4.5	6.4*	6.4*	6.4	6.8*	4.2	6.4*	2.7	4.7*	2.5 3.2*	<b>7.8</b>
	3.0	11.2	11.6*	6.2	9.1*	4.2	6.9*	2.7	5.8*	2.3 3.2*	<b>8.2</b>
	1.5	10.9	12.4*	6.1	10.2*	4.1	7.4*	2.7	5.9*	2.2 3.3*	<b>8.3</b>
	0	11.0	14.6*	6.0	10.5*	3.9	7.6*	2.6	6.0*	2.2 3.5*	<b>8.1</b>
	-1.5	10.5	16.9*	5.7	10.6*	3.6	7.7*	2.5	5.1*	2.4 4.0*	<b>7.6</b>
	-3.0	10.4	17.5*	5.5	10.9*	3.4	6.7*			2.9 4.2*	<b>6.8</b>
	-4.5	10.2	13.1*							5.5 6.7*	<b>4.4</b>
LC	9.0								5.5* 5.5*	<b>3.4</b>	
	7.5			5.9*	5.9*				3.9* 3.9*	<b>5.8</b>	
	6.0			5.7*	5.7*	4.3	5.7*		3.1 3.4*	<b>7.0</b>	
	4.5	6.4*	6.4*	6.6	6.8*	4.3	6.1	2.8	4.2	2.6 3.2*	<b>7.8</b>
	3.0	11.6*	11.6*	6.4	9.1*	4.3	6.0	2.8	4.2	2.3 3.2*	<b>8.2</b>
	1.5	11.4	12.4*	6.3	9.0	4.2	6.0	2.7	4.1	2.2 3.3*	<b>8.1</b>
	0	11.5	14.6*	6.2	9.1	4.0	6.0	2.6	4.0	2.3 3.5	<b>8.3</b>
	-1.5	11.1	16.9*	5.9	9.3	3.7	5.7	2.5	3.9	2.5 3.8	<b>7.6</b>
	-3.0	11.0	17.5*	5.7	9.0	3.6	5.5			2.9 4.2*	<b>6.8</b>
	-4.5	10.8	13.1*							5.8 6.7*	<b>4.4</b>
LC Blade up	9.0								5.5* 5.5*	<b>3.4</b>	
	7.5			5.9*	5.9*				3.9* 3.9*	<b>5.8</b>	
	6.0			5.7*	5.7*	4.6	5.7*		3.4* 3.4*	<b>7.0</b>	
	4.5	6.4*	6.4*	6.8*	6.8*	4.6	6.2	3.0	4.2	2.8 3.2*	<b>7.8</b>
	3.0	11.6*	11.6*	6.8	9.1*	4.6	6.1	3.0	4.2	2.5 3.2*	<b>8.2</b>
	1.5	12.1	12.4*	6.6	9.2	4.5	6.0	3.0	4.2	2.4 3.3*	<b>8.3</b>
	0	12.2	14.6*	6.6	9.2	4.3	6.1	2.9	4.1	2.5 3.5*	<b>8.1</b>
	-1.5	11.9	16.9*	6.4	9.4	4.0	5.8	2.8	4.0	2.7 3.8	<b>7.6</b>
	-3.0	11.8	17.5*	6.1	9.1	3.9	5.6			3.2 4.2*	<b>6.8</b>
	-4.5	11.6	13.1*							6.2 6.7*	<b>4.4</b>
LC Blade down	9.0								5.5* 5.5*	<b>3.4</b>	
	7.5			5.9*	5.9*				3.9* 3.9*	<b>5.8</b>	
	6.0			5.7*	5.7*	4.8	5.7*		3.4* 3.4*	<b>7.0</b>	
	4.5	6.4*	6.4*	6.8*	6.8*	4.8	6.4*	3.2	4.7*	3.0 3.2*	<b>7.8</b>
	3.0	11.6*	11.6*	7.1	9.1*	4.8	6.9*	3.2	5.8*	2.7 3.2*	<b>8.2</b>
	1.5	12.4*	12.4*	7.0	10.2*	4.8	7.4*	3.1	5.9*	2.6 3.3*	<b>8.3</b>
	0	13.0	14.6*	7.0	10.5*	4.6	7.6*	3.0	6.0*	2.6 3.5*	<b>8.1</b>
	-1.5	12.8	16.9*	6.8	10.6*	4.3	7.7*	2.9	5.1*	2.9 4.0*	<b>7.6</b>
	-3.0	12.7	17.5*	6.5	10.9*	4.1	6.7*			3.4 4.2*	<b>6.8</b>
	-4.5	12.5	13.1*							6.6 6.7*	<b>4.4</b>

## Stick 3.05 m

Under-carriage	3.0 m		4.5 m		6.0 m		7.5 m		m		
	m	m	m	m	m	m	m	m			
NLC <sup>(*)</sup>	9.0								3.9* 3.9*	<b>4.0</b>	
	7.5					3.3*	3.3*			3.0* 3.0*	<b>6.1</b>
	6.0					3.8	4.9*			2.6 2.7*	<b>7.3</b>
	4.5			5.8	6.0*	3.8	5.8*	2.5	4.1	2.1 2.7*	<b>8.0</b>
	3.0	10.2	13.6*	5.6	8.6*	3.7	5.9	2.5	4.1	1.9 2.7*	<b>8.4</b>
	1.5	9.9	13.0*	5.5	8.9	3.7	5.8	2.4	4.1	1.8 2.8*	<b>8.5</b>
	0	9.9	14.4*	5.4	8.9	3.5	5.9	2.3	3.9	1.8 3.1*	<b>8.3</b>
	-1.5	9.3	16.5*	5.1	9.1	3.2	5.6	2.1	3.8	1.9 3.5	<b>7.9</b>
	-3.0	9.1	17.2*	4.8	8.9	3.0	5.4			2.3 4.1	<b>7.0</b>
	-4.5	8.8	15.1*	4.6	8.0*					3.6 5.2*	<b>5.3</b>
NLC <sup>(*)</sup> Blade up	9.0								3.9* 3.9*	<b>4.0</b>	
	7.5					3.3*	3.3*			3.0* 3.0*	<b>6.1</b>
	6.0					4.1	4.9*			2.7* 2.7*	<b>7.3</b>
	4.5			6.0*	6.0*	4.1	5.8*	2.7	4.2	2.3 2.7*	<b>8.0</b>
	3.0	10.8	13.6*	6.0	8.6*	4.0	6.0	2.7	4.2	2.1 2.7*	<b>8.4</b>
	1.5	10.4	13.0*	5.8	9.0	4.0	5.9	2.6	4.1	2.0 2.8*	<b>8.5</b>
	0	10.4	14.4*	5.8	9.0	3.8	6.0	2.5	4.0	2.0 3.1*	<b>8.3</b>
	-1.5	10.0	16.5*	5.5	9.2	3.5	5.7	2.3	3.9	2.1 3.5	<b>7.9</b>
	-3.0	9.7	17.2*	5.2	9.0	3.2	5.4			2.5 4.2	<b>7.0</b>
	-4.5	9.5	15.1*	4.9	8.0*					3.9 5.2*	<b>5.3</b>
NLC <sup>(*)</sup> Blade down	9.0								3.9* 3.9*	<b>4.0</b>	
	7.5					3.3*	3.3*			3.0* 3.0*	<b>6.1</b>
	6.0					4.2	4.9*			2.7* 2.7*	<b>7.3</b>
	4.5			6.0*	6.0*	4.2	5.8*	2.8	4.3*	2.4 2.7*	<b>8.0</b>
	3.0	11.2	13.6*	6.2	8.6*	4.2	6.7*	2.8	5.6*	2.2 2.7*	<b>8.4</b>
	1.5	10.9	13.0*	6.0	10.0*	4.1	7.3*	2.7	5.8*	2.1 2.8*	<b>8.5</b>
	0	10.9	14.4*	6.0	10.4*	4.0	7.5*	2.6	5.9*	2.1 3.1*	<b>8.3</b>
	-1.5	10.5	16.5*	5.7	10.5*	3.7	7.6*	2.4	5.5*	2.2 3.7*	<b>7.9</b>
	-3.0	10.3	17.2*	5.5	10.8*	3.4	7.3*			2.6 4.6*	<b>7.0</b>
	-4.5	10.0	15.1*	5.2	8.0*					4.0 5.2*	<b>5.3</b>
LC	9.0								3.9* 3.9*	<b>4.0</b>	
	7.5					3.3*	3.3*			3.0* 3.0*	<b>6.1</b>
	6.0					4.3	4.9*			2.7* 2.7*	<b>7.3</b>
	4.5			6.0*	6.0*	4.3	5.8*	2.9	4.2	2.5 2.7*	<b>8.0</b>
	3.0	11.7	13.6*	6.4	8.6*	4.3	6.0	2.9	4.2	2.2 2.7*	<b>8.4</b>
	1.5	11.4	13.0*	6.2	9.0	4.2	5.9	2.8	4.1	2.1 2.8*	<b>8.5</b>
	0	11.4	14.4*	6.2*	9.0	4.1	6.0	2.6	4.0	2.1 3.1*	<b>8.3</b>
	-1.5	11.1	16.5*	5.9	9.2	3.8	5.7	2.5	3.9	2.3 3.5	<b>7.9</b>
	-3.0	10.9	17.2*	5.7	9.0	3.5	5.4			2.7 4.2	<b>7.0</b>
	-4.5	10.6	15.1*	5.4	8.0*					4.2 5.2*	<b>5.3</b>
LC Blade up	9.0								3.9* 3.9*	<b>4.0</b>	
	7.5					3.3*	3.3*			3.0* 3.0*	<b>6.1</b>
	6.0					4.6	4.9*			2.7* 2.7*	<b>7.3</b>
	4.5			6.0*	6.0*	4.6	5.8*	3.1	4.3	2.7* 2.7*	<b>8.0</b>
	3.0	12.4	13.6*	6.8	8.6*	4.5	6.1	3.1	4.3	2.4 2.7*	<b>8.4</b>
	1.5	12.0	13.0*	6.6	9.1	4.5	6.0	3.0	4.2	2.3 2.8*	<b>8.5</b>
	0	12.1	14.4*	6.6	9.1	4.4	6.0	2.9	4.1	2.3 3.1*	<b>8.3</b>
	-1.5	11.9	16.5*	6.4	9.3	4.1	5.8	2.7	3.9	2.5 3.6	<b>7.9</b>
	-3.0	11.7	17.2*	6.1	9.1	3.8	5.5			2.9 4.3	<b>7.0</b>
	-4.5	11.4	15.1*	5.8	8.0*					4.5 5.2*	<b>5.3</b>
LC Blade down	9.0								3.9* 3.9*	<b>4.0</b>	
	7.5					3.3*	3.3*			3.0* 3.0*	<b>6.1</b>
	6.0					4.8	4.9*			2.7* 2.7*	<b>7.3</b>
	4.5			6.0*	6.0*	4.8	5.8*	3.3	4.3*	2.7* 2.7*	<b>8.0</b>
	3.0	13.2	13.6*	7.1	8.6*	4.7	6.7*	3.3	5.6*	2.6 2.7*	<b>8.4</b>
	1.5	12.8	13.0*	6.9	10.0*	4.7	7.3*	3.2	5.8*	2.5 2.8*	<b>8.5</b>
	0	12.8	14.4*	6.9	10.4*	4.6	7.5*	3.0	5.9*	2.5 3.1*	<b>8.3</b>
	-1.5	12.9	16.5*	6.8	10.5*	4.3	7.6*	2.9	5.5*	2.7 3.7*	<b>7.9</b>
	-3.0	12.6	17.2*	6.5	10.8*	4.1	7.3*			3.1 4.6*	<b>7.0</b>
	-4.5	12.3	15.1*	6.2	8.0*					4.8 5.2*	<b>5.3</b>



Height



Can be slewed through 360°



In longitudinal position of undercarriage



Max. reach





\* Limited by hydr. capacity

The load values are quoted in tons (t) at stick end (without bucket), and may be swung 360° on firm and even ground. Adjacent values are valid for the undercarriage when in the longitudinal position

# Lift Capacities

with Mono Boom Offset 5.20 m, Counterweight 3.1 t and Track Pads 500 mm/600 mm

Stick 2.25 m											Stick 2.45 m													
Under-carriage	m	3.0 m		4.5 m		6.0 m		7.5 m		m	Under-carriage	m	3.0 m		4.5 m		6.0 m		7.5 m		m			
		LC	LC	LC	LC	LC	LC	LC	LC				LC	LC	LC	LC	LC	LC	LC	LC		LC		
NLC <sup>1)</sup>	7.5			4.6*	4.6*					3.9*	3.9*	4.6	7.5								3.5*	3.5*	4.9	
	6.0					3.5	4.0*			3.4	3.4*	6.1	6.0					3.5	4.6*			3.1*	3.1*	6.3
	4.5			5.4	7.2*	3.4	5.8			2.6	3.3*	6.9	4.5			5.5	7.0*	3.4	5.8			2.5	3.0*	7.1
	3.0			4.9	8.5*	3.2	5.5			2.3	3.4*	7.4	3.0			4.9	8.3*	3.2	5.5	2.2	3.4*	2.2	3.1*	7.5
	1.5			4.4	8.2	3.0	5.3			2.2	3.7*	7.5	1.5			4.4	8.2	3.0	5.3	2.1	3.8	2.1	3.3*	7.6
	0	5.5*	5.5*	4.1	7.9	2.8	5.1			2.2	3.9	7.2	0	5.9*	5.9*	4.1	7.9	2.8	5.1			2.1	3.7*	7.4
NLC <sup>1)</sup> Blade up	-1.5	7.7	10.9*	4.1	7.9	2.8	5.1			2.4	4.4	6.7	-1.5	7.6	10.5*	4.1	7.9	2.8	5.0			2.3	4.2	6.9
	-3.0	8.0	9.0*	4.3	6.9*					3.2	5.1*	5.6	-3.0	7.8	9.6*	4.2	7.2*					2.9	5.0*	5.9
	-4.5												-4.5											
	7.5			4.6*	4.6*					3.9*	3.9*	4.6	7.5									3.5*	3.5*	4.9
	6.0					3.7	4.0*			3.4*	3.4*	6.1	6.0					3.8	4.6*			3.1*	3.1*	6.3
	4.5			5.8	7.2*	3.7	5.9			2.8	3.3*	6.9	4.5			5.8	7.0*	3.7	5.9			2.7	3.0*	7.1
NLC <sup>1)</sup> Blade down	3.0			5.2	8.5*	3.4	5.6			2.5	3.4*	7.4	3.0			5.3	8.3*	3.4	5.6	2.4	3.4*	2.4	3.1*	7.5
	1.5			4.7	8.4	3.2	5.4			2.3	3.7*	7.5	1.5			4.8	8.4	3.2	5.4	2.3	3.8	2.2	3.3*	7.6
	0	5.5*	5.5*	4.5	8.1	3.1	5.2			2.4	4.0	7.2	0	5.9*	5.9*	4.5	8.1	3.0	5.2			2.3	3.7*	7.4
	-1.5	8.3	10.9*	4.5	8.0	3.0	5.2			2.7	4.5	6.7	-1.5	8.2	10.5*	4.4	8.0	3.0	5.1			2.5	4.2	6.9
	-3.0	8.6	9.0*	4.6	6.9*					3.4	5.1*	5.6	-3.0	8.5	9.6*	4.5	7.2*					3.2	5.0*	5.9
	-4.5												-4.5											
LC	7.5			4.6*	4.6*					3.9*	3.9*	4.6	7.5									3.5*	3.5*	4.9
	6.0					4.0	4.0*			3.4*	3.4*	6.1	6.0					4.0	4.6*			3.1*	3.1*	6.3
	4.5			6.2	7.2*	3.9	5.9			3.0	3.3*	6.9	4.5			6.3	7.0*	3.9	5.9			2.9	3.0*	7.1
	3.0			5.7	8.5*	3.7	5.6			2.7	3.4*	7.4	3.0			5.7	8.3*	3.7	5.6	2.6	3.4*	2.6	3.1*	7.5
	1.5			5.2	8.4	3.5	5.4			2.5	3.7*	7.5	1.5			5.2	8.4	3.5	5.4	2.5	3.8	2.4	3.3*	7.6
	0	5.5*	5.5*	4.9	8.1	3.3	5.2			2.6	4.0	7.2	0	5.9*	5.9*	4.9	8.1	3.3	5.2			2.5	3.7*	7.4
LC Blade up	-1.5	9.4	10.9*	4.9	8.0	3.3	5.2			2.9	4.5	6.7	-1.5	9.3	10.5*	4.8	8.0	3.2	5.1			2.7	4.2	6.9
	-3.0	9.0*	9.0*	5.0	6.9*					3.7	5.1*	5.6	-3.0	9.5	9.6*	5.0	7.2*					3.5	5.0*	5.9
	-4.5												-4.5											
	7.5			4.6*	4.6*					3.9*	3.9*	4.6	7.5									3.5*	3.5*	4.9
	6.0					4.0*	4.0*			3.4*	3.4*	6.1	6.0					4.3	4.6*			3.1*	3.1*	6.3
	4.5			6.7	7.2*	4.2	6.0			3.3	3.3*	6.9	4.5			6.7	7.0*	4.2	5.9*			3.0*	3.0*	7.1
LC Blade down	3.0			6.1	8.5*	4.0	5.7			2.9	3.4*	7.4	3.0			6.2	8.3*	4.0	5.7	2.8	3.4*	2.8	3.1*	7.5
	1.5			5.6	8.5	3.8	5.5			2.8	3.7*	7.5	1.5			5.6	8.5	3.8	5.5	2.7	3.9	2.6	3.3*	7.6
	0	5.5*	5.5*	5.4	8.2	3.6	5.3			2.8	4.1	7.2	0	5.9*	5.9*	5.3	8.2	3.6	5.3			2.7	3.7*	7.4
	-1.5	10.2	10.9*	5.3	8.2	3.6	5.3			3.1	4.6	6.7	-1.5	10.1	10.5*	5.3	8.1	3.6	5.2			3.0	4.3	6.9
	-3.0	9.0*	9.0*	5.5	6.9*					4.0	5.1*	5.6	-3.0	9.6*	9.6*	5.4	7.2*					3.8	5.0*	5.9
	-4.5												-4.5											

 Height  
  Can be slewed through 360°  
  In longitudinal position of undercarriage  
  Max. reach  
 \* Limited by hydr. capacity

The load values are quoted in tons (t) at stick end (without bucket), and may be swung 360° on firm and even ground. Adjacent values are valid for the undercarriage when in the longitudinal position. Capacities are valid for 600 mm wide track pads. Indicated loads are based on ISO 10567 standard and do not exceed 75% of tipping or 87% of hydraulic capacity (indicated via \*). Without bucket cylinder, link and lever the lift capacities will increase by 285 kg. Lifting capacity of the excavator is limited by machine stability and hydraulic capacity.

According to European Standard, EN 474-5: In the European Union excavators have to be equipped with an overload warning device, a load diagram and automatic safety check valves on hoist cylinders and stick cylinder(s), when they are used for lifting operations which require the use of lifting accessories.

<sup>1)</sup> Values are calculated with 500 mm wide track pads for the NLC-Undercarriage

### Stick 2.65 m

Under-carriage	3.0 m		4.5 m		6.0 m		7.5 m		m			
	m	m	m	m	m	m	m	m	m	m		
NLC <sup>1)</sup>	7.5								3.1*	3.1*	5.2	
	6.0								2.8*	2.8*	6.5	
	4.5								2.4	2.7*	7.3	
	3.0	9.0	12.8*			3.6	4.7*		2.1	2.8*	7.7	
	1.5			4.9	8.0*	3.2	5.6	2.2	3.9	2.0	3.0*	7.8
	0	6.2*	6.2*	4.4	8.3	3.0	5.3	2.1	3.7	2.0	3.0*	7.8
Blade up	7.5								3.1*	3.1*	5.2	
	6.0								2.8*	2.8*	6.5	
	4.5			5.5	6.7*	3.4	5.7*		2.4	2.7*	7.3	
	3.0	9.6	12.8*	5.3	8.0*	3.5	5.7	2.4	3.9	2.3	2.8*	7.7
	1.5			4.8	8.4	3.2	5.4	2.3	3.8	2.2	3.0*	7.8
	0	6.2*	6.2*	4.5	8.0	3.0	5.2	2.2	3.7	2.2	3.4*	7.6
Blade down	7.5								3.1*	3.1*	5.2	
	6.0								2.8*	2.8*	6.5	
	4.5			6.1	6.7*	3.8	5.7*		2.7	2.7*	7.3	
	3.0	10.1	12.8*	5.6	8.0*	3.6	6.3*	2.5	4.2*	2.4	2.8*	7.7
	1.5			5.0	9.2*	3.4	6.8*	2.4	5.3*	2.3	3.0*	7.8
	0	6.2*	6.2*	4.7	9.6*	3.2	7.0*	2.3	4.5*	2.3	3.4*	7.6
LC	7.5								3.1*	3.1*	5.2	
	6.0								2.8*	2.8*	6.5	
	4.5			6.3	6.7*	4.0	5.7*		2.7*	2.7*	7.3	
	3.0	10.7	12.8*	5.8	8.0*	3.7	5.7	2.6	3.9	2.4	2.8*	7.7
	1.5			5.2	8.4	3.5	5.4	2.5	3.8	2.3	3.0*	7.8
	0	6.2*	6.2*	4.9	8.0	3.3	5.2	2.4	3.7	2.3	3.4*	7.6
Blade up	7.5								3.1*	3.1*	5.2	
	6.0								2.8*	2.8*	6.5	
	4.5			6.7*	6.7*	4.4	4.7*		2.7*	2.7*	7.3	
	3.0	11.5	12.8*	6.2	8.0*	4.0	5.8	2.8	4.0	2.7	2.8*	7.7
	1.5			5.6	8.6	3.8	5.5	2.7	3.9	2.5	3.0*	7.8
	0	6.2*	6.2*	5.3	8.2	3.6	5.3	2.6	3.8	2.6	3.4*	7.6
Blade down	7.5								3.1*	3.1*	5.2	
	6.0								2.8*	2.8*	6.5	
	4.5			6.7*	6.7*	4.5	5.7*		2.7*	2.7*	7.3	
	3.0	12.5	12.8*	6.6	8.0*	4.3	6.3*	3.0	4.2*	2.8*	2.8*	7.7
	1.5			6.0	9.2*	4.0	6.8*	2.9	5.3*	2.7	3.0*	7.8
	0	6.2*	6.2*	5.7	9.6*	3.8	7.0*	2.8	4.5*	2.7	3.4*	7.6

### Stick 3.05 m

Under-carriage	3.0 m		4.5 m		6.0 m		7.5 m		m			
	m	m	m	m	m	m	m	m	m	m		
NLC <sup>1)</sup>	7.5								2.5*	2.5*	5.5	
	6.0								2.3*	2.3*	6.7	
	4.5								2.3*	2.3*	7.5	
	3.0	9.4	11.5*	5.1	7.6*	3.2	5.6	2.2	3.9	2.0	2.4*	7.9
	1.5			4.5	8.4	3.0	5.3	2.1	3.7	1.9	2.6*	8.0
	0	7.4	7.8*	4.1	7.9	2.8	5.1	2.0	3.6	1.9	3.0*	7.8
Blade up	7.5								2.5*	2.5*	5.5	
	6.0								2.3*	2.3*	6.7	
	4.5								2.3*	2.3*	7.5	
	3.0	10.1	11.5*	5.4	7.6*	3.5	5.7	2.4	4.0	2.2	2.4*	7.9
	1.5			4.8	8.5	3.2	5.4	2.3	3.8	2.1	2.6*	8.0
	0	7.8*	7.8*	4.5	8.1	3.0	5.2	2.2	3.7	2.1	3.0*	7.8
Blade down	7.5								2.5*	2.5*	5.5	
	6.0								2.3*	2.3*	6.7	
	4.5								2.3*	2.3*	7.5	
	3.0	10.6	11.5*	5.7	7.6*	3.7	6.0*	2.5	4.0*	2.3	2.4*	7.9
	1.5			5.1	8.9*	3.4	6.6*	2.4	5.0*	2.2	2.6*	8.0
	0	7.6*	7.6*	4.7	9.5*	3.2	6.9*	2.3	4.9*	2.2	3.0*	7.8
LC	7.5								2.5*	2.5*	5.5	
	6.0								2.3*	2.3*	6.7	
	4.5								2.3*	2.3*	7.5	
	3.0	11.3	11.5*	5.9	7.6*	3.8	5.7	2.6	4.0	2.4	2.4*	7.9
	1.5			5.3	8.5	3.5	5.4	2.5	3.8	2.2	2.6*	8.0
	0	7.8*	7.8*	4.9	8.1	3.3	5.2	2.4	3.7	2.2	3.0*	7.8
Blade up	7.5								2.5*	2.5*	5.5	
	6.0								2.3*	2.3*	6.7	
	4.5								2.3*	2.3*	7.5	
	3.0	11.5*	11.5*	6.3	7.6*	4.1	5.8	2.8	4.0*	2.4*	2.4*	7.9
	1.5			5.7	8.7	3.8	5.5	2.7	3.9	2.4	2.6*	8.0
	0	7.8*	7.8*	5.3	8.2	3.6	5.3	2.6	3.8	2.5	3.0*	7.8
Blade down	7.5								2.5*	2.5*	5.5	
	6.0								2.3*	2.3*	6.7	
	4.5								2.3*	2.3*	7.5	
	3.0	11.5*	11.5*	6.7	7.6*	4.3	6.0*	3.0	4.0*	2.4*	2.4*	7.9
	1.5			6.1	8.9*	4.0	6.6*	2.9	5.0*	2.6	2.6*	8.0
	0	7.8*	7.8*	5.7	9.5*	3.8	6.9*	2.8	4.9*	2.6	3.0*	7.8

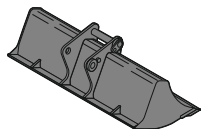
Height 
 Can be slewed through 360° 
 In longitudinal position of undercarriage 
 Max. reach 
 \* Limited by hydr. capacity

The load values are quoted in tons (t) at stick end (without bucket), and may be swung 360° on firm and even ground. Adjacent values are valid for the undercarriage when in the longitudinal position. Capacities are valid for 600 mm wide track pads. Indicated loads are based on ISO 10567 standard and do not exceed 75% of tipping or 87% of hydraulic capacity (indicated via \*). Without bucket cylinder, link and lever the lift capacities will increase by 285 kg. Lifting capacity of the excavator is limited by machine stability and hydraulic capacity.

According to European Standard, EN 474-5: In the European Union excavators have to be equipped with an overload warning device, a load diagram and automatic safety check valves on hoist cylinders and stick cylinder(s), when they are used for lifting operations which require the use of lifting accessories.

<sup>1)</sup> Values are calculated with 500 mm wide track pads for the NLC-Undercarriage

# Available Attachments



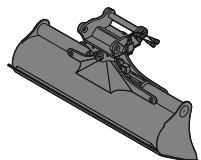
## Rigid Ditch Cleaning Bucket

### GRL 90, for direct mounting

Cutting width	mm	1,500	2,000	2,400				
Capacity	m <sup>3</sup>	0.50	0.70	0.85				
Weight	kg	400	506	586				

### GRL 90, for mounting to quick coupler SWA 48

Cutting width	mm	1,500	1,500	2,000	2,000	2,000	2,400	2,400
Capacity	m <sup>3</sup>	0.50	0.95	0.70	1.20	1.25	0.85	1.15
Weight	kg	430	560	400	640	600	600	650



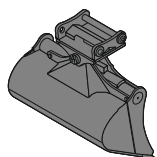
## Tiltable Ditch Cleaning Bucket

### GRL 90, 2 x 50° tiltable, for direct mounting

Cutting width	mm	1,600	1,600	2,000	2,000	2,000	2,200	2,400
Capacity	m <sup>3</sup>	0.55	0.80	0.50	0.70	1.00	0.80	0.85
Weight	kg	650	790	610	800	870	800	870

### GRL 90, 2 x 50° tiltable, for mounting to quick coupler SWA 48

Cutting width	mm	1,600	1,600	2,000	2,000	2,000	2,200	2,200	2,400
Capacity	m <sup>3</sup>	0.55	0.80	0.50	0.70	1.00	0.80	1.15	0.85
Weight	kg	730	850	740	870	870	870	970	930



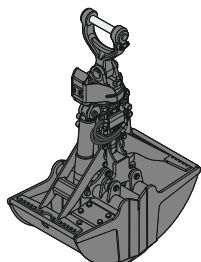
## Tilt Bucket

### SL 90, 2 x 50° tiltable, for direct mounting

Cutting width	mm	1,500	1,600	1,600		
Capacity	m <sup>3</sup>	0.60	0.80	1.00		
Weight	kg	680	750	810		

### SL 90, 2 x 50° tiltable, for mounting to quick coupler SWA 48

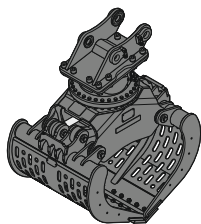
Cutting width	mm	1,500	1,600	1,600	1,600
Capacity	m <sup>3</sup>	0.60	0.80	0.80	1.00
Weight	kg	680	820	950	870
HD-version				X	



## Clamshells

### GMZ 24, earthmoving shell, for mounting to quick coupler SWA 48

Cutting width	mm	600	800	1,000
Capacity	m <sup>3</sup>	0.34	0.46	0.60
Weight	kg	890	970	1,040



## Sorting Grab

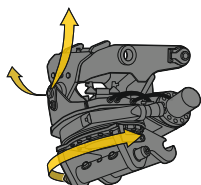
ribbed

perforated

stone tong

### SG 25B, for mounting to quick coupler SWA 48

Cutting width	mm	800	1,000	800	1,000	1,200	800
Capacity	m <sup>3</sup>	0.50	0.65	0.55	0.75	0.90	0.60
Weight	kg	1,210	1,295	1,170	1,230	1,325	1,170



## Tiltrotator

### LH-TR 25, for mounting to quick coupler SWA 48

Weight	kg	720
Rotation		360°
Tilt		2 x 50°

# Serial Equipment

## Undercarriage

- Lashing eyes
- Sprocket with dirt ejector
- Track and carrier rollers, sealed and lifetime-lubricated

## Uppercarriage

- Anti-skid surfaces
- Centralised lubrication system (automatic)
- Engine hood with gas spring opening
- Filters accessible from ground level
- Front right rearview mirrors
- Handrails
- Hydraulic oil level, visible from ground level
- Lockable fuel tank cap
- Lockable service doors
- Lockable storage box
- Main switch, manual, lockable
- Protection grid on radiator fan
- Sound insulation
- Swing drive gearbox oil level, visible from the cab
- Swing-out fan
- Windshield washer fluid tank

## Hydraulic System

- Filter with integrated fine filters
- Hydraulic pressure measuring ports
- Hydraulic tank shut-off valve
- Liebherr Synchron Comfort System (LSC)
- Magnetic rod
- Pressure accumulator for controlled lowering of equipment with engine turned off

## Engine

- Air filter with automatic dust ejector
- Automatic engine idling / speed increase, controlled via joystick sensors
- Common-Rail injection system
- Exhaust gas after-treatment system – DOC + DPF + SCR
- Fixed geometry turbocharger
- Fuel fine filter
- Fuel pre-filter and water separator
- Fuel priming pump
- Intercooler
- Power Pack EU Stage V
- Stepless adjustable engine speed

## Operator's Cab

- 7" multifunction colour touchscreen
- Air conditioning, automatic, tri-zone, controlled via display
- Armrests adjustable in width, height and inclination
- Bottle holder
- Cab air filters housing, accessible from ground level
- Cab door sliding windows
- Coat hook
- DEF consumption on touchscreen
- DEF level on touchscreen
- Electric socket in cabin (12 V)
- Electric socket in cabin (24 V)
- Emergency hammer
- Fuel consumption on touchscreen
- Fuel level on touchscreen
- Interior lighting
- Laminated right hand side window
- LiDAT Plus (Liebherr data transfer system) \*
- Mechanical hour meters, visible from ground level
- Rain hood over front window opening
- Rearview mirror
- Rear view monitoring camera
- Rear window emergency exit
- Roll-down sun blinds for windscreen and roof window
- ROPS safety cab structure (ISO 12117-2)
- Rubber floor mat, fixed on floor and removable
- Shortkey button on joystick configurable
- Storage nets
- Storage spaces
- Tilttable console left
- Tinted windows
- Visco-elastic damping
- Windscreen wiper and washer
- Work mode selector

## Equipment

- Boom cylinders regeneration
- Pipe fracture safety valve for stick cylinder
- Pipe fracture safety valves for boom cylinders
- SAE split flanges on high pressure lines
- Stick cylinder regeneration

\* optionally extendable after one year

# Equipment Standard/Option

## Undercarriage

Chain guide 1 piece	•
Chain guide 3 pieces	+
Dozer and stabilizer blade 2,500 mm	+
Dozer and stabilizer blade 2,600 mm	+
Dozer and stabilizer blade 2,850 mm	+
Dozer and stabilizer blade 3,000 mm	+
Reinforced cover and base plate for undercarriage centre section	+
Rubber track pads 600 mm	+
Special painting	+
Standard cover plate for undercarriage centre section	•
Steps	•
Steps wide	+
Track pads triple grouser 500/750/900 mm	+
Track pads triple grouser 600 mm	•
Tracks, sealed and greased	•
Undercarriage LC	+
Undercarriage NLC	+
Undercarriage storage compartment	+

## Uppercarriage

Air pre-filter with cyclonical dust trap	+
Counterweight standard 3.1 t	•
Electric socket on uppercarriage (24 V)	+
Extended tool set including tool box	+
Flashing beacon on uppercarriage, rear, LED, 1 piece	+
Fuel anti-theft protection	+
Headlight on uppercarriage, lateral right, LED+, 1 piece	+1)
Headlights on uppercarriage, front, halogen, 2 pieces, protections included	•1)
Headlights on uppercarriage, front, LED+, 2 pieces, protections included	+1)
Headlights on uppercarriage, rear, LED+, 2 pieces	+1)
Pre-heating system for fuel	+
Reflective warning stickers	+
Reversible fan drive	+
Skyview 360°	+
Special painting	+
Tank refilling pump fuel	+
Tool set including storage case	•

## Hydraulic System

Bypass filter for hydraulic oil	+
Liebherr hydraulic oil	•
Liebherr hydraulic oil, adapted for extreme climate conditions	+
Liebherr hydraulic oil, biodegradable	+

## Engine

Automatic engine shutdown after idling	+
--	---



## Operator's Cab

2" seat belt with retractor	•
3" seat belt with retractor, orange colour	+
4-points seat belt	+
Acoustic travel alarm deactivatable	+
Attachment continuous operation system	+
Auxiliary heater programmable	+
Bottom windscreen wiper	+
Cool box (12 V)	+
Dark tinted windows	+
Electronic immobiliser	+
Emergency stop in cab	+
FGPS front guard	+
Filter for hydraulic hammer return flow	+
Fire extinguisher	+
First-aid box	+
Flashing beacon on cabin, LED, 1 piece	+
Footrest	+
FOPS top guard	+
Handrests elevated for joysticks	+
Headlights on cab, front, halogen, 2 pieces	• <sup>1)</sup>
Headlights on cab, front, LED+, 2 pieces	+ <sup>1)</sup>
Headlights on cab roof, front, LED+, 2 pieces	+ <sup>1)</sup>
High pressure circuit switchable on pedals or mini-joystick	+
High pressure circuit with Tool Control (20 attachment adjustments on display)	+
Impact resistant one-piece windscreen	+
Impact resistant roof window	+
Laminated roof window	•
Lightbar on cabin	+
Medium pressure circuit	+
Mini-joysticks proportional	+
Movement restriction for stick	+
Operator seat Comfort	•
Operator seat Premium	+
Overload warning system	+
Preparation for machine guidance system	+
Radio Comfort	+
Radio pre-installation	•
Retractable laminated two-piece windscreen	•
Right hand side view monitoring camera	•
Roof sun shield	+
Roof window wiper	+
Special painting	+
Sun visor	+
Switch between high pressure and bucket cylinder controls	+
Windscreen bottom protection grid	+



## Equipment

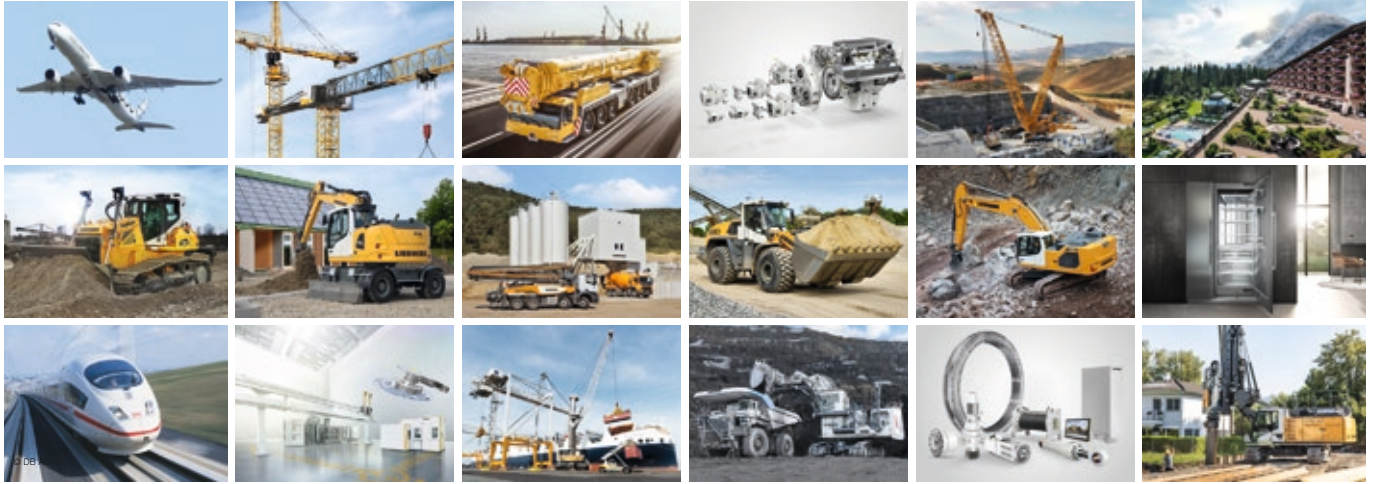
Bucket cylinder rod protection	+
Centralised lubrication extended for connecting link	+
Centralised lubrication extended for quick coupler	+
Grapple hydraulic lines (bucket cylinder inactive)	+
Headlight guards on boom	+
Headlights on boom, halogen, 2 pieces	• <sup>1)</sup>
Headlights on boom, LED+, 2 pieces	+ <sup>1)</sup>
Headlights on stick, right and left, LED+, 2 pieces, protections included	+ <sup>1)</sup>
Leak oil line for attachment	+
Liebherr bucket range	+
Liebherr tooth system	+
LIKUFIX electric signal plug	+
LIKUFIX for quick coupler SWA 48 hydraulic	+
Load holding valve for bucket cylinder	+
Mono boom 5.20 m	+
Mono boom offset 5.20 m	+
Quick coupler SWA 48 hydraulic	+
Quick coupler SWA 48 mechanical	+
Security for hoist cylinders	+
Special painting	+
Stick 2.25 m	+
Stick 2.45 m	+
Stick 2.65 m	+
Stick 3.05 m	+
Stick bottom protection	+
Tool Management	+
Two-piece boom 5.40 m	+
Working envelope height limitation	+

• = Standard, + = Option

<sup>1)</sup> Equipment not individually available, but only as predefined lighting packages  
Non-exhaustive list, please contact us for further information.

**Options and/or special equipments, supplied by vendors other than Liebherr, are only to be installed with the knowledge and approval of Liebherr in order to retain warranty.**

# The Liebherr Group of Companies



## Wide Product Range

The Liebherr Group is one of the largest construction equipment manufacturers in the world. Liebherr's high-value products and services enjoy a high reputation in many other fields. The wide range includes domestic appliances, aerospace and transportation systems, machine tools and maritime cranes.

## Exceptional Customer Benefit

Every product line provides a complete range of models in many different versions. With both their technical excellence and acknowledged quality, Liebherr products offer a maximum of customer benefits in practical applications.

## State-of-the-art Technology

To provide consistent, top quality products, Liebherr attaches great importance to each product area, its components and core technologies. Important modules and components are developed and manufactured in-house, for instance the entire drive and control technology for construction equipment.

## Worldwide and Independent

Hans Liebherr founded the Liebherr family company in 1949. Since then, the family business has steadily grown to a group of more than 130 companies with more than 48,000 employees located on all continents. The corporate headquarters of the Group is Liebherr-International AG in Bulle, Switzerland. The Liebherr family is the sole owner of the company.

[www.liebherr.com](http://www.liebherr.com)

## Liebherr-France SAS

2 avenue Joseph Rey, B.P. 90287, FR-68005 Colmar Cedex  
☎ +33 389 21 30 30, Fax +33 389 21 37 93  
[www.liebherr.com](http://www.liebherr.com), E-Mail: [info.lfr@liebherr.com](mailto:info.lfr@liebherr.com)  
[www.facebook.com/LiebherrConstruction](https://www.facebook.com/LiebherrConstruction)